

Safety

- The Gripnail #211 Air Tool features a safety interlock to prevent fasteneres from be accidentally projected from the tool. The fastener and driver must be depressed firmly against the work surface in order for the driver to contact th piston. The tool may be acitivated if the driver is not depressed, but the fastener will not be projected.
- To ensure safe and trouble-free operation of your Air Tool, read all instructions before assembly. Also, follow instruction in the order they appear in this instruction sheet.
- WARNING: OPERATORS MUST WEAR SAFETY GLASSES OR GOGGLES AND HEARING PROTECTION WHEN OPERATING THIS TOOL. NOISE DURING INSTALLATION OF THE METALTACK MAY EXCEED 100dB. (Operators should wear company standard Personal Protection Equipment)
- Operating pressure must not exceed 100PSI (7kg/sq cm).
- Always disconnect the air supply before servicing, when removing the Driver, or when the tool is not in use.
- Check regularly to be certain the Driver moves freely and does not stick or bind in the extended or cocked position during operation. (See "Troubleshooting" section)
- Do not connect a female quick coupler to the tool; attach a male free flow nipple to the tool for the Freedom Swivel® and a female quick coupler to the supply hose. An improper connection will cause the tool to remain charged after it is disconnected, allowing it to be fired if the trigger is activated.
- Do not, under any circumstance, fire the tool with the Driver in the cocked position without driving a fastener.
- Keep hands and face away from the area being fastened.
- Do not use oxygen or combustible gas as a power source for this tool.
- FAILURE TO OBSERVE ANY OF THESE WARNINGS MAY RESULT IN INJURY.

What you need



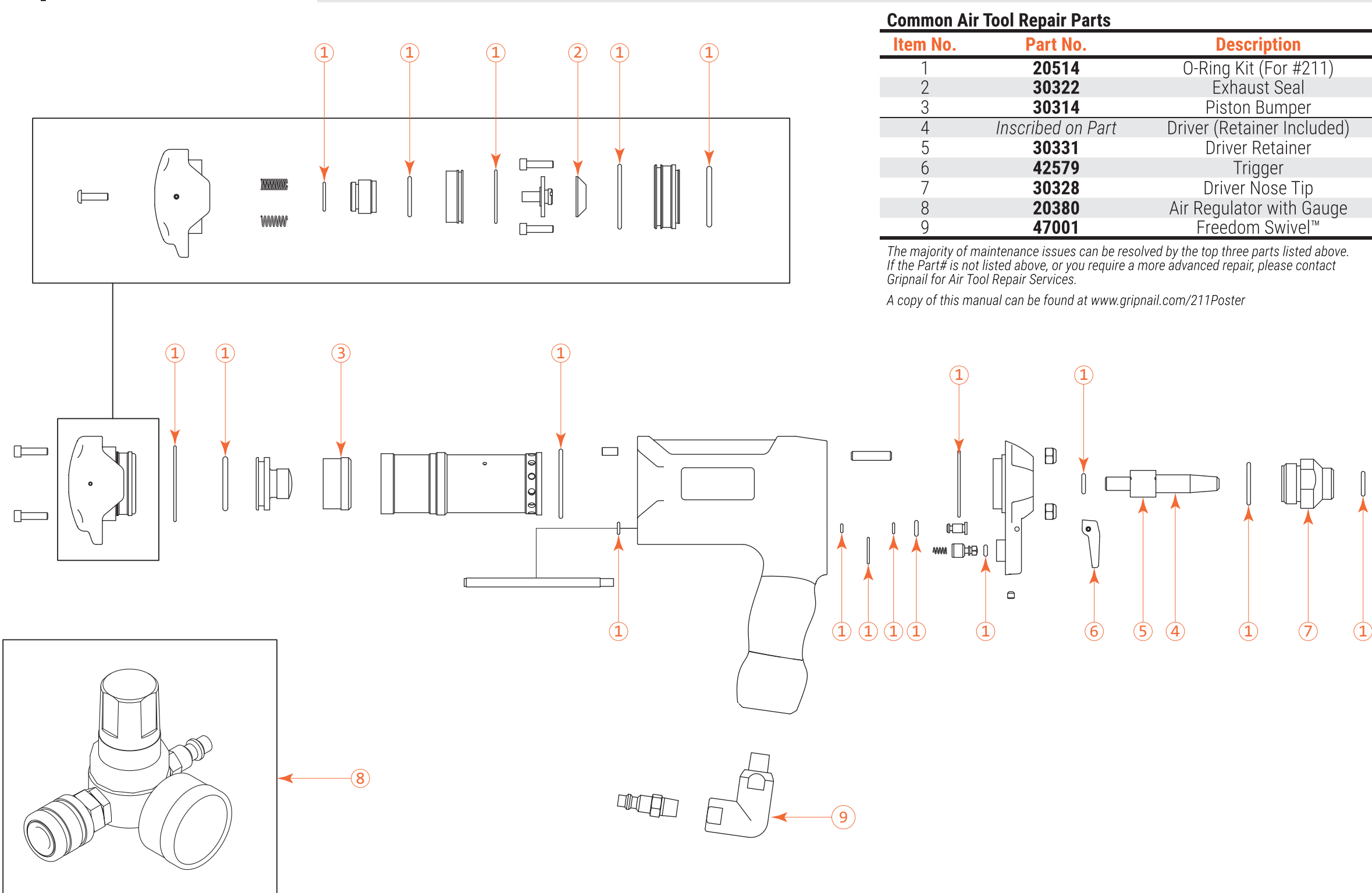
Prepare the tool



Apply the fasteners



Replacement Parts

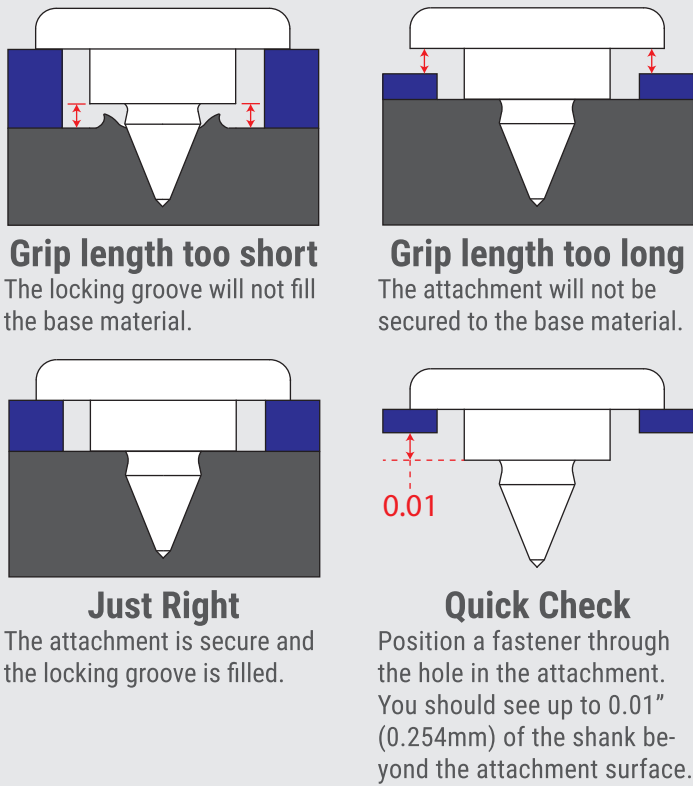


Common Air Tool Repair Parts		
Item No.	Part No.	Description
1	20514	O-Ring Kit (For #211)
2	30322	Exhaust Seal
3	30314	Piston Bumper
4	Inscribed on Part	Driver (Retainer Included)
5	30331	Driver Retainer
6	42579	Trigger
7	30328	Driver Nose Tip
8	20380	Air Regulator with Gauge
9	47001	Freedom Swivel™

The majority of maintenance issues can be resolved by the top three parts listed above. If the Part# is not listed above, or you require a more advanced repair, please contact Gripnail for Air Tool Repair Services.

A copy of this manual can be found at www.gripnail.com/211Poster

The correct industrial fastener



Air Pressure

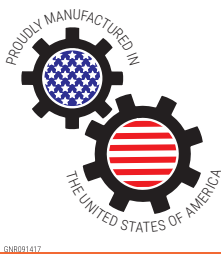
- If the attachment is loose** - make certain that you have the right fastener and then increase the air pressure in increments of 5PSI until the attachment is tight.
- If the fastener is damaging the attachment** - decrease the air pressure in increments of 5PSI until the attachment is secured but not damaged.
- If the fastener does not hold** - make certain that you have the right fastener and then contact Gripnail at 401-216-7900 or gripnail@gripnail.com

Maintenance

- Lubricate** - A filter-regulator-lubricator unit should be installed within 20 feet of the tool. Use S.A.E. #10 non detergent oil
- Driver Magnetism** - If the driver no longer holds the fastener, check for driver wear. The tip of the magnetic driver will eventually become worn and will need to be replace. (Call Gripnail and ask about the free Driver re-magnification program to restore holding power to older drivers)

Troubleshooting

- Air Tool "Jumps"** - If the fastener misses the target, try holding the tool more firmly and making sure it is exactly perpendicular to the working surface and the tool is depressed from the back (as depicted in the "Apply the Fastener" section). Also, make certain that the base material is solidly supported. This is particularly important when fastening to curved surface.
- Low Air Tool Impact** - If the Air Tool impact decreases, first check the air pressure, then look for the following worn or broken parts:
 - Check for driver binding** Make certain that the driver slides back and forth freely in the nose piece. If the driver is not lubricated or binds it will decrease the tools impact.
 - Check for a cracked Driver Retainer** This part will fail if the tool is repeatedly "dry" fired, the PSI is too high, or no regulator is used while installing a fastener. Never alter the retainer. Replace it when needed.



ISO 9001 Certified
Made in the U.S.A.
An Employee Owned Company

97 Dexter Rd, E. Providence, RI 02914
Email: gripnail@gripnail.com
Tel:(401) 216-7900 Fax:(401) 438-8520

