

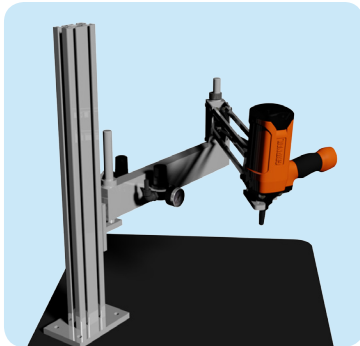


SPEED | VERSATILE TOOL PRODUCTION | HOLDER

Strong Arm Air Tool Work Station

Versatile Tool Holder Increases Productivity

The Strong Arm Work Station converts the Model # 211 Air Tool into a versatile operator friendly work station. The Strong Arm counter balances the tool and keeps it perpendicular to the work surface for precision impact every time.



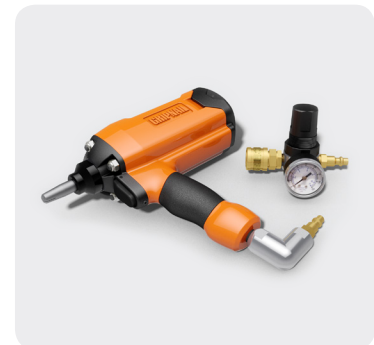
Apply fasteners to a variety of different shaped parts.

The Strong Arm Work Station

- Reduces operator fatigue while keeping the tool accessible.
- Fastening is consistent because operator influence on the assembly is reduced.
- Bolts to work benches and has a 30 inch reach with pivoting, parallel aluminum arms.

The Strong Arm is perfect for applying fasteners to a variety of different shaped parts. The one hand operation allows assemblies to be more efficient and consistent.

For more information visit: www.gripnail.com.



The Strong Arm works with the 211 Gripnail single-impact pneumatic tool.



(800) 474-7624
www.gripnail.com

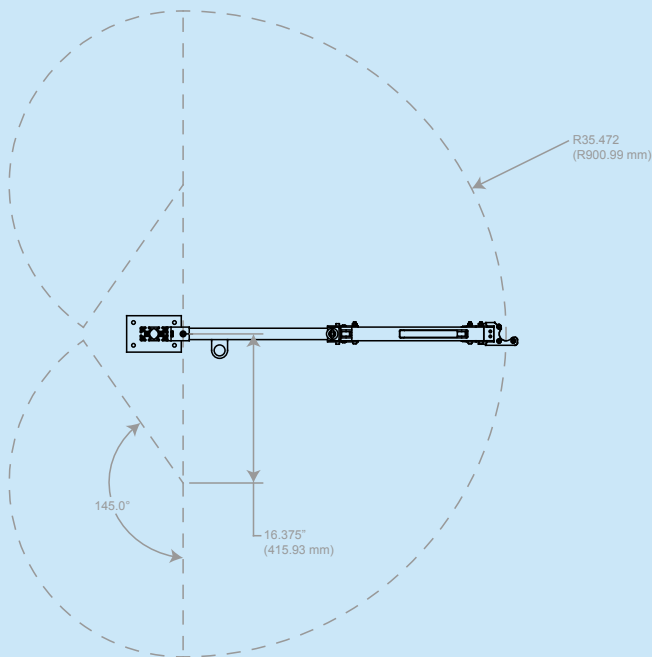
211 Air Tool

The Gripnail 211 Air Tool is designed for the simple application of MetalTacks, PunchPins, Gripnails, and DriveTacks. Fasteners are placed on the magnetic driver and the tool is activated by a trigger which delivers a single controlled impact. The amount of impact is regulated by air pressure and there is a safety interlock which absorbs the impact if the tool is accidentally activated. Impact is only delivered when the tool's driver is depressed against a solid work surface and the trigger is activated.

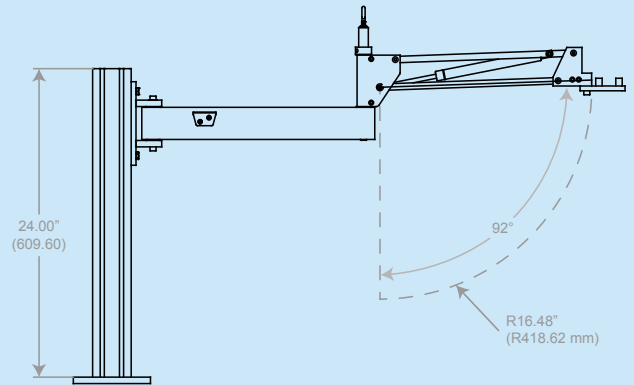


Strong Arm Technical Data (Part #20307)

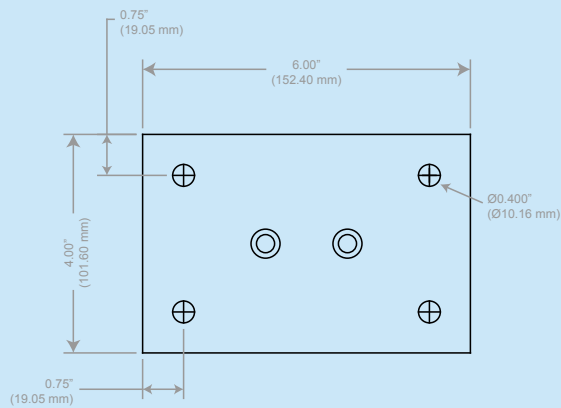
Top Work Space



Side Work Space



Base Plate



Since 1966 Gripnail Corporation's ergonomically designed pneumatic hand tools and manufacturing machinery have improved their users' safety, comfort and productivity.



ISO 9001:2008 Registered
Made in the U.S.A.
An employee owned company

97 Dexter Road, East Providence, RI 02914
Email: gripnail@gripnail.com
(800) 474-7624 Fax: (401) 438-8520

